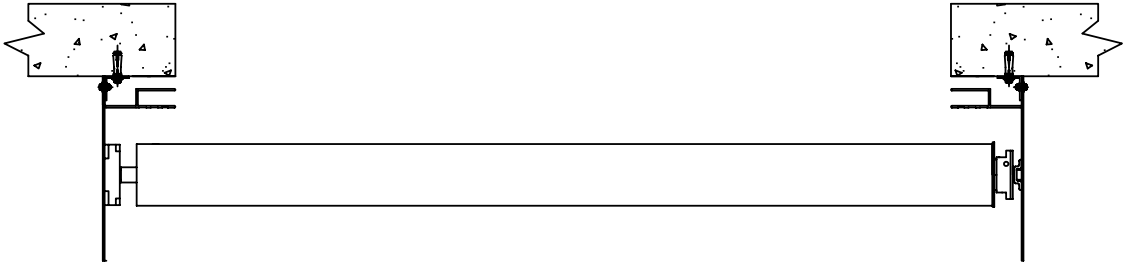
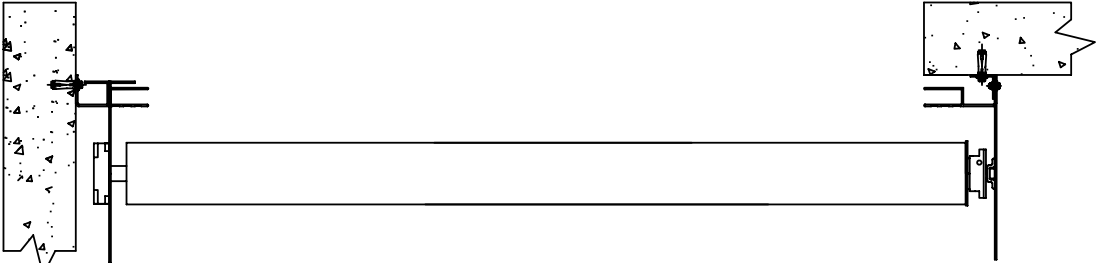


# FITTING OPTIONS



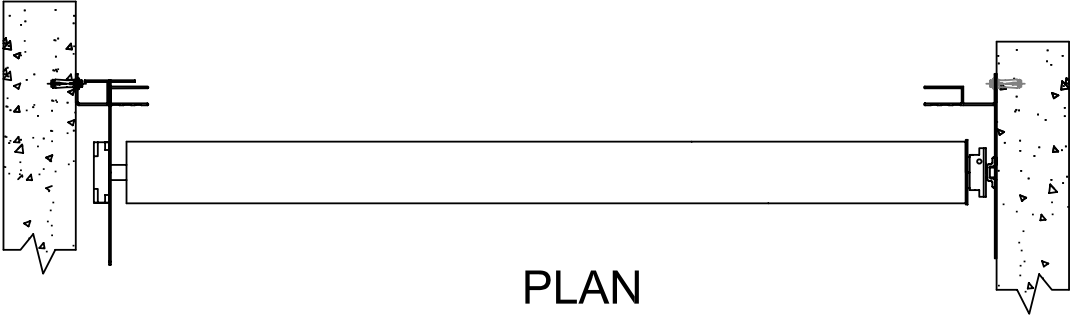
PLAN

Face Fix



PLAN

Half Tunnel Fix



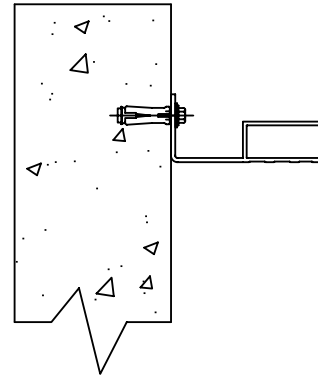
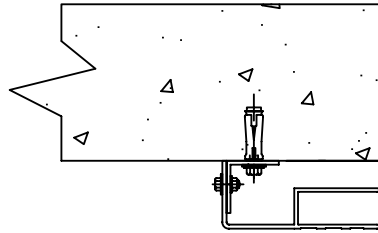
PLAN

FullTunnel Side Fix

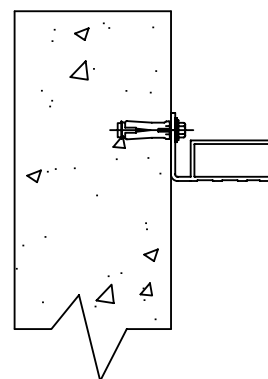
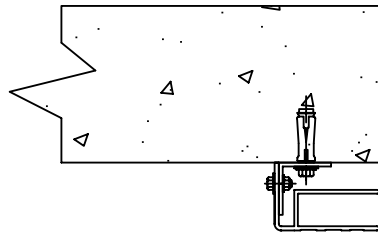
MATERIAL

# Fixing Details

## Electrically Operated

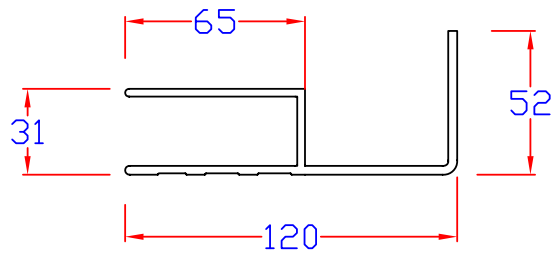


## Manually Operated

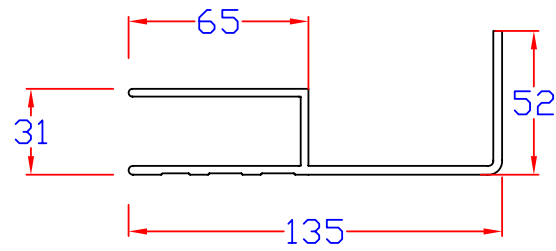


MATERIAL

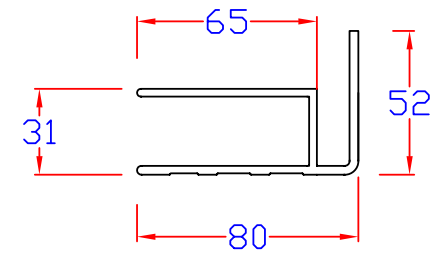
## ALUMINIUM GUIDE PROFILES (3mm)



Electrically Operated  
11 series

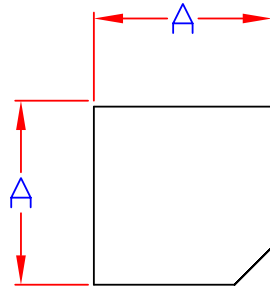


Electrically Operated  
15 series



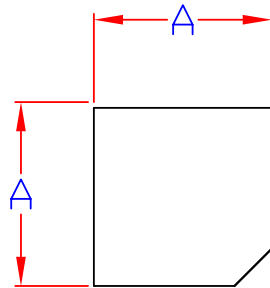
Manually Operated

MATERIAL



Manually Operated  
End Plate Dimensions

Up to opening height (mm)	Dimension A (mm)
1200	280
2100	305
2700	330
3300	356
4000	380

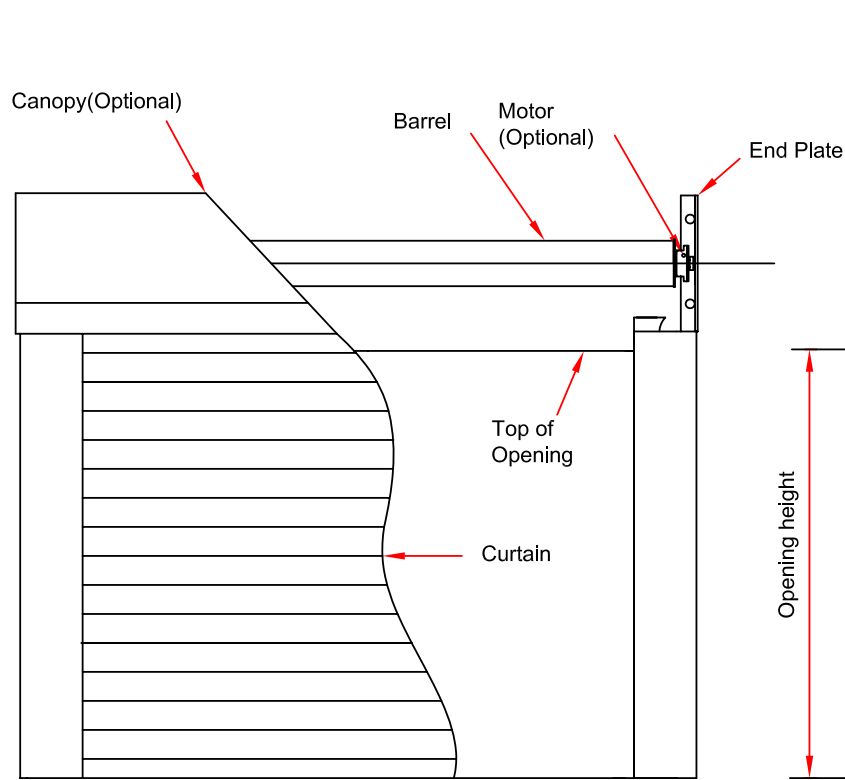


Electrically Operated  
End Plate Dimensions

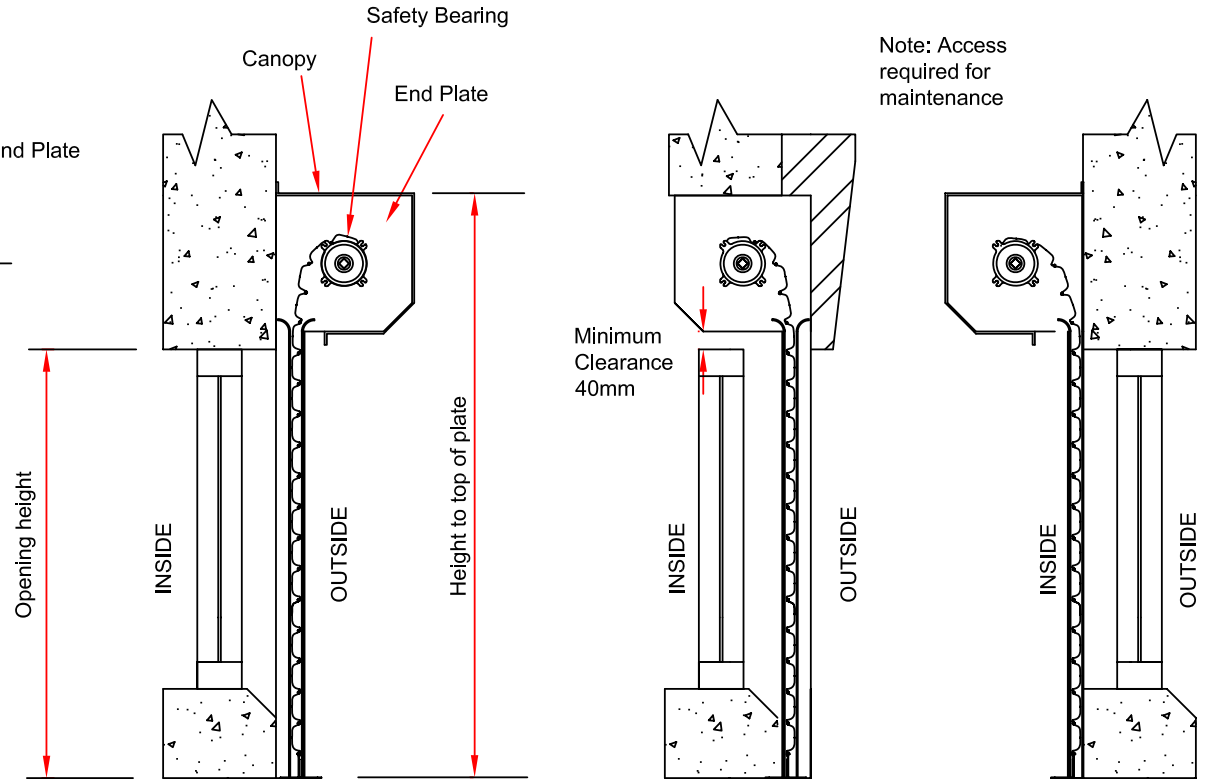
Up to opening height (mm)	Dimension A (mm)
2500	280
3000	305
3500	330
4500	343
5500	380

MATERIAL

# ELEVATION



# SECTION



Note: Access required for maintenance

OUTSIDE FITTING

OUTSIDE FITTING IN OVER HEAD

INSIDE FITTING

$$\text{Height to top of plate} = \text{Opening height} + \text{End Plate Dimension A} + 38 \text{ mm}$$

MATERIAL